



**Electrolux**  
PROFESSIONAL

## Handling System for Rack Type Manual Sorting Table, 5 Baskets - Right to Left, 2640mm - Front Loading

ITEM # \_\_\_\_\_

MODEL # \_\_\_\_\_

NAME # \_\_\_\_\_

SIS # \_\_\_\_\_

AIA # \_\_\_\_\_



865296 (HSMSF5RL)

Manual sorting table, 5  
baskets, front connection,  
Right>Left, 2640 mm

### Short Form Specification

#### Item No. \_\_\_\_\_

Constructed in 304 AISI stainless steel. Basin with sloping bottom, drain with double strainer baskets. Long plastic rollers. Rack-guides inclined towards the sorting side. Square 40x40mm square legs with height-adjustable feet. Designed for 500x500mm dishwashing baskets. Attachment to Rack Type dishwasher or other tables on the left front side. Basket feed direction: from right to left.

### Main Features

- Manual sorting table with front loading can be connected either to a rack type dishwasher or after the roller conveyor, a 90° dishwasher driven curve and a side loader on the loading side.
- Designed to transport 500x500 mm dishwashing baskets.
- "Key holes" and "snap on" system reduces the number of screws needed for fast and easy installation.
- Long rollers and strainer box easy to remove.
- Manual racks handling toward the dishwasher made easier thanks to the long rollers.

### Construction

- All surfaces smooth with polished finish.
- Constructed in AISI 304 stainless steel with square 40x40mm legs.
- Thick welded flanges for sturdy connection between the units.
- Sloping bottom of the table grants a smooth and rapid drainage.
- Stainless steel strainer baskets easy to remove.
- Manual receiving and sorting operations.
- Connection from front.
- Optionally equipped with tray slides, a single adjustable over-shelf for empty baskets, a double adjustable over-shelf for sorting of baskets and empty baskets, spray guns, cutlery soaking basin and basin wash nozzles.
- Stainless steel feet 50 mm adjustable in height to align the operation height between the dishwasher and table.

### Optional Accessories

- Pre-rinse unit (thermostatic mixer and shower) to be mounted on overshell PNC 863136 ☐
- Automatic basin wash with timer for 5-basket sorting table PNC 863231 ☐
- Emergency stop kit for Rack Type Dishwasher (not for Basic handling system) PNC 865162 ☐
- Basket support for vertical stacking of baskets (to be used with overshell) PNC 865208 ☐
- Pre-rinse unit (mixer and shower) PNC 865209 ☐
- Double overshell for 5-basket sorting table, 2630 mm PNC 865427 ☐
- Overshell for 5-basket sorting table, 2630 mm PNC 865431 ☐
- Tray slide for 5-basket sorting table, 2640 mm PNC 865435 ☐
- Tray slide fixing brackets (3pcs) PNC 865437 ☐
- Grid undershell for 5-basket sorting table PNC 865440 ☐
- Soaking basin with lifting device for cutlery rack PNC 865442 ☐
- Pre-wash spray unit, 1500 mm PNC 865443 ☐

APPROVAL: \_\_\_\_\_



Experience the Excellence  
[www.electroluxprofessional.com](http://www.electroluxprofessional.com)



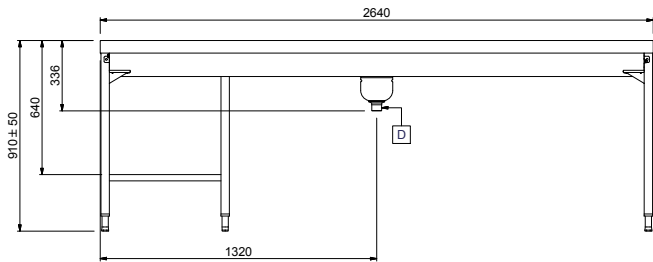
- |   |            |                          |
|---|------------|--------------------------|
| • Tray slide for sorting table, 500 mm  | PNC 865444 | <input type="checkbox"/> |
| • Tray slide with waste hole and rubber ring, 500 mm                                | PNC 865445 | <input type="checkbox"/> |
| • Dish scraper  | PNC 865447 | <input type="checkbox"/> |
| • Water heating kit for wash basin  | PNC 865449 | <input type="checkbox"/> |
| • Foldable tray slide for 5-basket sorting table, 2640 mm                           | PNC 865456 | <input type="checkbox"/> |
| • Retractable pre-rinse unit with fixed thermostatic water mixer, hose length, 14mm | PNC 865460 | <input type="checkbox"/> |
| • Brackets to support baskets under the sorting table                               | PNC 865478 | <input type="checkbox"/> |

## Handling System for Rack Type Manual Sorting Table, 5 Baskets - Right to Left, 2640mm - Front Loading

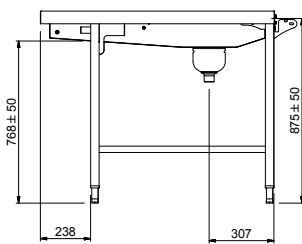
### Key Information:

External dimensions, Width:	2640 mm
865296 (HSMSF5RL)	
External dimensions, Depth:	1110 mm
External dimensions, Height:	910 mm
Net weight:	64 kg
Height adjustment:	50/50 mm
Basket movement:	Right to left
Basin material:	Stainless Steel AISI 304 - EN 1.4301
Type of rollers:	Long

Front



Side



D = Drain

Top

